

Stochastic excitation method for calculating the resolvent band structure of periodic media and waveguides

Vincent Laude* and Maria E. Korotyaeva

Institut FEMTO-ST, CNRS, Université Bourgogne Franche-Comté, Besançon, France



(Received 16 February 2018; revised manuscript received 17 June 2018; published 29 June 2018)

We introduce a stochastic excitation method for calculating the dispersion relation for waves propagating in periodic media or along waveguides and subject to material loss or radiation damping. Instead of looking for an explicit or implicit functional relation between frequency ω and wave number k , as is usually done, we consider a mapping of the resolvent set in the dispersion space (ω, k) . Bands appear as the trace of Lorentzian responses containing local information on propagation loss in both time and space domains. For illustration purposes, the method is applied to a lossy sonic crystal, a radiating surface phononic crystal, and a radiating optical waveguide. The resolvent band structure can be obtained for any system described by a time-harmonic wave equation.

DOI: [10.1103/PhysRevB.97.224110](https://doi.org/10.1103/PhysRevB.97.224110)

I. INTRODUCTION

The dispersion relation is essential information to describe wave propagation [1]. This is especially true for structures that support wave propagation, such as waveguides and artificial crystals, including photonic [2–4] and phononic [5–7] crystals. The dispersion relation gives the possible propagation modes and relates the angular frequency ω to the wave vector \mathbf{k} . In the case of periodic media and crystals, it is termed the band structure. It is very often obtained by looking for the eigenvalues and eigenfunctions of a matrix in the case of finite-dimensional problems. Finding the eigenvalues and eigenfunctions of a finite-size matrix is indeed nowadays a well-mastered numerical problem [8]. Solvers are routinely used to obtain them, at least in the case of lossless waveguides and crystals. Indeed, in the absence of loss, one often obtains a self-adjoint propagation operator, i.e., an operator satisfying Hermitian symmetry. In this case, the Hilbert-Schmidt theorem tells us that the spectrum lies on the real line [9]. If the operator is furthermore compact, eigenvalues are discrete and isolated (in case they are degenerate, the corresponding eigenfunctions are orthogonal). Physically, this situation is generally implied when one plots the dispersion relation as a graph $\omega(\mathbf{k})$. Both frequency and wave vector are real quantities, and the dispersion relation is composed of distinct bands that can be numbered. Note that compactness here refers to the domain of definition being finite and the operator being bounded.

The situation becomes more obscure when propagation loss or some infinite dimension enters the picture. In the case of loss, the self-adjoint property is lost. In the case of an infinite domain of definition, the operator is no longer compact. In the latter case, there exist computational techniques to approximate the problem on a finite domain, such as the perfectly matched layer (PML) [10]. As a result, however, self-adjointness is generally lost. Fortunately, a theorem similar to the Hilbert-Schmidt theorem still holds for compact operators in finite-dimensional

Hilbert spaces, but eigenvalues are complex [9]. As a result, the bands composing the dispersion relation are not real functions anymore. Different physical examples where this situation happens will be considered in this paper: a lossy sonic crystal [11], such as the one depicted in Fig. 1, a phononic crystal of pillars sitting on a semi-infinite substrate [12], and an open optical waveguide. Specifically, the goal of this paper is to obtain a generalized representation of the dispersion relation that applies to these difficult cases. The representation obtained, which we term the resolvent band structure, relies on an analysis of the response of the propagation medium to a random excitation with a definite frequency and wave vector. Figure 1(b) shows a typical random excitation applied to a unit cell of a crystal. The idea of considering the dispersion relation as a graph of discrete bands $\omega(\mathbf{k})$ is replaced by a response function $E(\omega, \mathbf{k})$ similar to a density of states. The response itself is obtained from the solution to the forced problem, as shown in Fig. 1(c). Infinite domains are transformed to a compact domain using a PML technique implemented as a complex coordinate transform [13]. As we show in Sec. II, the stochastic response reveals the spectrum as the complement of the resolvent set of the operator and gives essential information about the amount of propagation loss at a particular dispersion point. Furthermore, the response can be made almost independent of the particular realization of the random excitation. In Sec. III, we describe the application of the method to the three different situations mentioned above. In Sec. IV, before concluding the paper, we discuss the merits of the stochastic excitation method and its relation to previous methods.

II. THEORY

Let us first recall some results from spectral theory [9]. We place ourselves in an appropriate functional space, usually a Hilbert space. For a bounded linear operator A , $R(\lambda) = (A - \lambda I)^{-1}$ is, by definition, the resolvent operator. The resolvent set is the set of all complex numbers λ such that $R(\lambda)$ exists and is bounded. The spectrum is defined as the complement of the resolvent set in the complex plane. Every

*vincent.laude@femto-st.fr

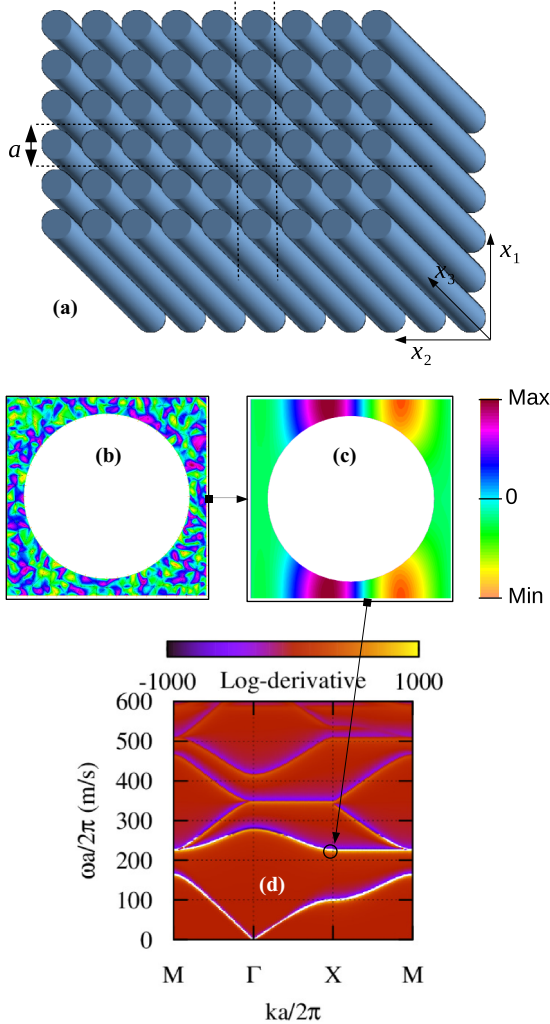


FIG. 1. Band structure of a two-dimensional sonic crystal of rigid cylinders in air computed with the stochastic excitation method, with material loss taken into account. (a) The finite-size computation domain is here a unit cell of the crystal. (b) A spatially random excitation is applied, and the response (c) is obtained. (d) From the response, the resolvent band structure can be plotted. For further details see Sec. III A and Fig. 2.

eigenvalue of the operator A belongs to the spectrum. Note that this definition is more general than the usual definition of eigenvalues of matrices of finite-dimensional spaces. It also avoids the difficulties of defining the spectrum through a singular equation by considering instead its nonsingular complement.

According to the Hilbert-Schmidt theorem, the spectrum of a self-adjoint operator lies on the real line and is, in general, a spectral combination of a point spectrum of discrete eigenvalues and a continuous spectrum. For compact self-adjoint operators, eigenvalues are discrete and isolated. Eigenvalues λ_n and eigenfunctions \mathbf{e}_n satisfy $A\mathbf{e}_n = \lambda_n\mathbf{e}_n$. The eigenfunction expansion theorem tells us that any function can be written $\mathbf{f} = \sum_n f_n\mathbf{e}_n$, with the eigenfunctions \mathbf{e}_n forming an orthonormal basis. The notation $f_n = \langle \mathbf{f}, \mathbf{e}_n \rangle$ is for the scalar product in the functional space. As we indicated in the Introduction, in case the operator is not self-adjoint, a similar theorem holds

for compact operators in finite-dimensional Hilbert spaces, provided the eigenvalues are considered complex. Note that they can further be algebraically degenerated, but we will not consider that complication in this paper. This assumption is equivalent to assuming the operator is isomorphic to a diagonalizable matrix.

Linear wave equations, including those for acoustic, elastic, and optical waves, can generally be written for time-harmonic waves as

$$[K(\mathbf{k}) - \omega^2 M]\mathbf{u}(\omega, \mathbf{k}) = \mathbf{f}(\omega, \mathbf{k}), \quad (1)$$

where K is a stiffness operator, M is a mass operator, $\mathbf{u}(\omega, \mathbf{k})$ is a function describing the solution in reciprocal space, and $\mathbf{f}(\omega, \mathbf{k})$ is a forcing term at a particular frequency and wave vector. Equation (1) is obtained from a Fourier transform of the original wave equation over the time coordinate. The stiffness operator K is a differential operator of the space coordinates and can depend on an imposed wave vector \mathbf{k} for waveguide and artificial crystal problems. We can then define the resolvent operator as

$$R(\lambda) = (M^{-1}K - \lambda I)^{-1}, \quad (2)$$

with $\lambda = \omega^2$. Note that the inversion operation of the mass operator should be understood as symbolic and is introduced for convenience; in practice there is no need to invert a matrix or operator. The solution to Eq. (1) is formally

$$\mathbf{u} = R(\lambda)M^{-1}\mathbf{f}. \quad (3)$$

Introducing the eigenvalues λ_n and eigenfunctions \mathbf{e}_n of $M^{-1}K$, we obtain from the eigenfunction expansion theorem that

$$u_n = (\lambda_n - \lambda)^{-1}g_n, \quad (4)$$

with $g = M^{-1}\mathbf{f}$. Overall, the solution is

$$\mathbf{u} = \sum_n (\lambda_n - \lambda)^{-1}g_n\mathbf{e}_n. \quad (5)$$

This equation expresses the well-known fact that the solution to a linear equation is a linear combination of eigenfunctions. The coefficients of the combination are complex Lorentzian functions or poles, centered on the eigenvalues, and are also proportional to the projection of the excitation on each eigenfunction. When $\lambda \approx \lambda_n$, we have $\mathbf{u} \approx (\lambda_n - \lambda)^{-1}g_n\mathbf{e}_n$; that is, the solution approaches in the limit the particular eigenfunction. This observation leads to a practical way to obtain every eigenvalue and eigenfunction: one can explore all values of λ , i.e., the resolvent set; since the eigenvalues are isolated, each pole can be isolated and identified. Of course, such a procedure would be very lengthy compared to existing eigenvalue solvers. If we forget the idea of obtaining exactly all eigenvalues and wish to obtain only a view of the landscape of the resolvent set with a given, and limited, resolution, then the method can be useful, as we illustrate in the following section.

Equation (1) can be viewed as the dynamical equation obtained from the Euler-Lagrange principle with a Laplacian combining potential elastic energy, kinetic energy, and the work of the forcing term. A Hamiltonian operator can then be defined as

$$H = \frac{1}{2}(K + \omega^2 M), \quad (6)$$

and we evaluate the response as the self-energy of the solution, or

$$E = \langle \mathbf{H}\mathbf{u}, \mathbf{u} \rangle. \quad (7)$$

Using the eigenfunction expansion (5) for the solution, we have

$$E(\lambda) = \sum_{n,n'} \langle \mathbf{H}\mathbf{e}_n, \mathbf{e}_{n'} \rangle g_n (\lambda - \lambda_n)^{-1} g_{n'}^* (\lambda^* - \lambda_{n'}^*)^{-1}, \quad (8)$$

which is real and positive by construction if K and M are real operators. The response is an expansion over complex poles centered on the eigenvalues. Close to an eigenvalue, i.e., when $\lambda \approx \lambda_n$, $E(\lambda) \approx \langle \mathbf{H}\mathbf{e}_n, \mathbf{e}_n \rangle |g_n|^2 |\lambda - \lambda_n|^{-2}$. The response has then locally a possibly damped Lorentzian shape.

In order not to miss any of the poles, it is necessary that $g_n = \langle \mathbf{g}, \mathbf{e}_n \rangle \neq 0$ for any n . In practice, we can consider a spatially random excitation. If the number of degrees of freedom is large, then the probability that any $g_n = 0$ is very small. The result can further be made almost independent of the exact value of g_n by considering the log derivative of the response

$$\frac{\partial}{\partial \lambda} \ln E = \frac{1}{E} \frac{\partial E}{\partial \lambda}. \quad (9)$$

Indeed, writing $\lambda - \lambda_n = \alpha + i\beta$, with both α and β being real, we have locally

$$\frac{\partial}{\partial \alpha} \ln E \approx -2\alpha(\alpha^2 + \beta^2)^{-1}, \quad (10)$$

which is a real Lorentzian function. The response is thus practically independent of the excitation. Of course, Eq. (10) is valid only close to eigenvalue λ_n , which is separated from the other eigenvalues. In practice, it also requires that the eigenvalues are sufficiently isolated compared to the analyzing resolution.

As a whole, the stochastic response $E(\omega, \mathbf{k})$ contains information on the bands in the form of a continuous map in the dispersion space (ω, \mathbf{k}) . Each band leaves a trace which is locally a Lorentzian function. This Lorentzian function gives both the real part and the imaginary part of the local eigenvalue; in particular the width of the response informs on propagation damping in both time and space.

III. RESULTS

In this section we consider three different examples of the application of the stochastic excitation method. In each case, a direct eigenvalue analysis would have been difficult, as we argue.

A. Bloch waves in a lossy sonic crystal

Let us consider a two-dimensional sonic crystal composed of steel cylinders in air, as depicted in Fig. 1(a). The structure is an infinite periodic repetition of a square primitive unit cell of length a , periodic along axes x_1 and x_2 . The steel cylinders are assumed to be infinitely long in the x_3 direction. Time-harmonic waves satisfy the linear acoustic equation for pressure p in air,

$$-\nabla \cdot \left(\frac{1}{\rho} \nabla p \right) - \omega^2 \frac{p}{B} = f, \quad (11)$$

where the mass density $\rho(\mathbf{r})$ and the elastic modulus $B(\mathbf{r})$ are functions of position and $f(\mathbf{r})$ is an applied forcing term. These functions are discontinuous at the interface between matrix and inclusion. The band structure of a sonic crystal gives the dispersion relation of its Bloch waves. Bloch waves are, in this case, of the form $p(\mathbf{r}, t) = \bar{p}(\mathbf{r}) \exp[i(\omega t - \mathbf{k} \cdot \mathbf{r})]$, with $\bar{p}(\mathbf{r})$ being the periodic part of the solution. Because of the very large acoustic impedance mismatch between steel and air, the boundary condition on the cylinders can be approximated by $\frac{\partial p}{\partial n} = 0$ (the normal acceleration vanishes on the boundary). Section A 1 summarizes how to transform Eq. (11) into an integral equation, using the finite-element method, which is then easily cast into a linear system (1) and into an eigenvalue system in case the applied force vanishes.

In the absence of loss, the eigenvalue problem can be solved readily, and the band structure is usually presented as reduced frequency, $\omega a/2\pi$, as a function of reduced wave number, $ka/2\pi$. The result is shown in Fig. 2(a). As the

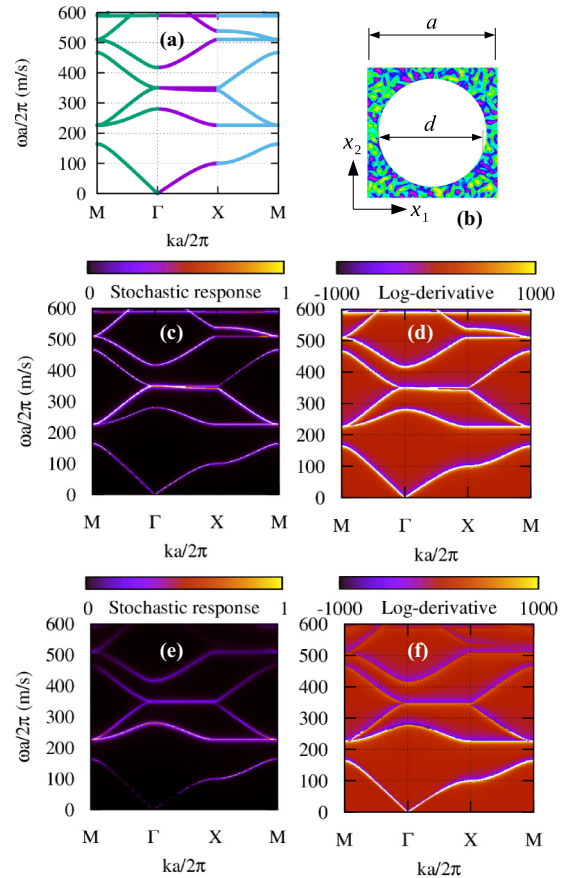


FIG. 2. A two-dimensional square-lattice sonic crystal of rigid cylinders in air, with $d/a = 0.8$. (a) The band structure for the lossless crystal is obtained by solving for frequency as a function of wave vector $\omega(\mathbf{k})$ along the path $M-\Gamma-X-M$ of the first Brillouin zone. (b) The stochastic excitation is applied in air as a random periodic field. (c) and (d) The normalized stochastic response and its log derivative for small loss ($\mu/Ba = 10^{-9}$ m/s) show mostly undamped Lorentzian functions following the bands in (a). (e) and (f) The normalized stochastic response and its log derivative for larger loss ($\mu/Ba = 10^{-7}$ m/s) show how damping distributes along each band.

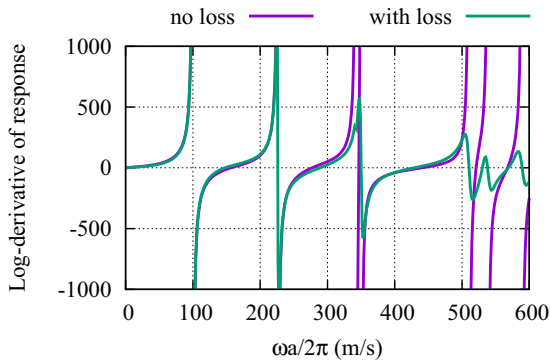


FIG. 3. Cross section of the resolvent band structure of Fig. 2, taken at the X point of the first Brillouin zone, without and with loss ($\mu/Ba = 10^{-7}$ m/s). Temporal damping affecting the different Bloch waves is apparent.

problem is self-adjoint and the unit cell is closed (compact), eigenfrequencies are discrete and isolated.

Let us now consider material loss. Specifically, loss is generally frequency dependent and is often modeled by a complex elastic modulus of the form $B' = B + j\omega\mu$, with μ being the viscosity [14]. Bloch's theorem remains valid for coefficients that depend on frequency, so we can still use the same formulation as before. The eigenvalue problem, however, becomes nonlinear. An alternative is to consider the complex band structure, i.e., to solve for k as a function of ω [15,16]. In this way, the spatial damping of time-harmonic waves can be obtained as a function of frequency.

In order to apply the stochastic excitation method, we apply a Bloch-Floquet excitation, $f(\mathbf{r}; \mathbf{k}, \omega) = \hat{f}(\mathbf{r}) \exp[t(\omega t - \mathbf{k} \cdot \mathbf{r})]$, with a stochastic periodic part, to the acoustic equation. We then explore the resolvent set as a function of k and ω and obtain the resolvent band structures in Figs. 2(c)–2(f). Viscous damping is added only to the host material. In this region of the unit cell, the elastic modulus $B'(r)$ is a constant complex function, so losses are applied uniformly. For illustration purposes, we have considered two arbitrary amounts of viscous damping, either $\mu/Ba = 10^{-9}$ s/m or $\mu/Ba = 10^{-7}$ s/m. With these values and for the highest reduced frequency in the band structure, the ratio $\omega\mu/B$ of the imaginary part to the real part of the elastic modulus is, at most, 4×10^{-6} and 4×10^{-4} , respectively. For the smaller value of viscous damping, the resolvent band structure is almost not affected, and every band in the lossless band structure is visible with about the same intensity. For the larger value of viscous damping, bands are increasingly damped with increasing frequency.

Frequency-dependent loss can be estimated by looking at a cross section of the resolvent band structure at constant k . For instance, Fig. 3 shows this cross section at the X point of the first Brillouin zone. A superposition of damped Lorentzian functions is clearly observed. Such vertical cross sections reveal the amount of temporal damping for every eigenvalue. Reciprocally, considering horizontal cross sections would reveal spatial damping of the same eigenvalues. The resolvent band structure thus contains the information of the complex band structure, with the imaginary part of the wave number replaced by the width of the Lorentzian response for

each band. At the same time, it also contains information on temporal damping that is absent in the complex band structure.

B. Surface Bloch waves of a phononic crystal of pillars

Surface elastic wave propagation on the surface of a phononic crystal has attracted a lot of attention, partly with regards to applications to surface acoustic wave technology [17,18], to microelectromechanical systems [19,20], and to thermal transport [6,21] but also from a fundamental point of view. If initial questions were related to the generalization of the definition of Rayleigh surface waves to periodic media [22], it was soon realized that surface phononic crystals must also support the propagation of radiating guided waves [23,24]. These waves can be described as surface excitations that are coupled with radiation modes of the substrate supporting the crystal. Radiation modes exist in the region of the dispersion diagram called the sound cone. By definition, the boundary of the sound cone is obtained by looking for the slowest bulk wave propagating in a given direction and along the surface of the substrate, with the direction of wave propagation being measured by the Poynting vector [25]. This procedure leads, in general, to an anisotropic but nondispersive velocity surface $v_{sc}(\mathbf{k}/|\mathbf{k}|)$ whose projection on the band structure looks like a cone.

The elastodynamic equation is

$$-T_{ij,j} - \rho\omega^2 u_i = f_i, \quad (12)$$

where \mathbf{u} is the displacement vector and T_{ij} is the stress tensor. f_i are body forces, and the constitutive relation of elasticity (Hooke's law) is

$$T_{ij} = c_{ijkl} S_{kl}, \quad (13)$$

with c_{ijkl} being the elastic tensor and $S_{ij} = \frac{1}{2}(u_{i,j} + u_{j,i})$ being the strain tensor.

In the general case of surface waves and in contrast to bulk waves, there does not exist an eigenvalue equation giving the band structure. Surface waves are, instead, found by looking for the zeros of a determinant of the boundary conditions or any equivalent secular equation [23,24]. This procedure, however, is, strictly speaking, limited to lossless surface waves, whose dispersion lies outside the sound cone. Leaky guided surface waves, whose dispersion lies inside the sound cone, have been obtained by looking for minima of the boundary condition determinant [24]. A difficulty is that radiation modes of the substrate have to be selected according to a partial-wave selection rule. In the general case of a finite-depth phononic crystal sitting on a semi-infinite substrate, this procedure is cumbersome, and the usual approach has been to consider only purely guided waves, i.e., nonradiative surface waves lying outside the sound cone [12,26,27]. An immediate drawback is that the nonradiative band structure is defined in a quite restricted sense and neglects the interaction of surface waves with bulk waves radiated in the substrate.

As an example, let us consider the phononic crystal of pillars in Fig. 4. A unit cell of the crystal shown in Fig. 4(a) consists of a cylindrical pillar of the same material as the substrate, silicon. The crystal has a square lattice with lattice constant a . For obvious practical reasons, the unit cell has to be limited to a certain depth. Figure 4(b) shows the band structure for

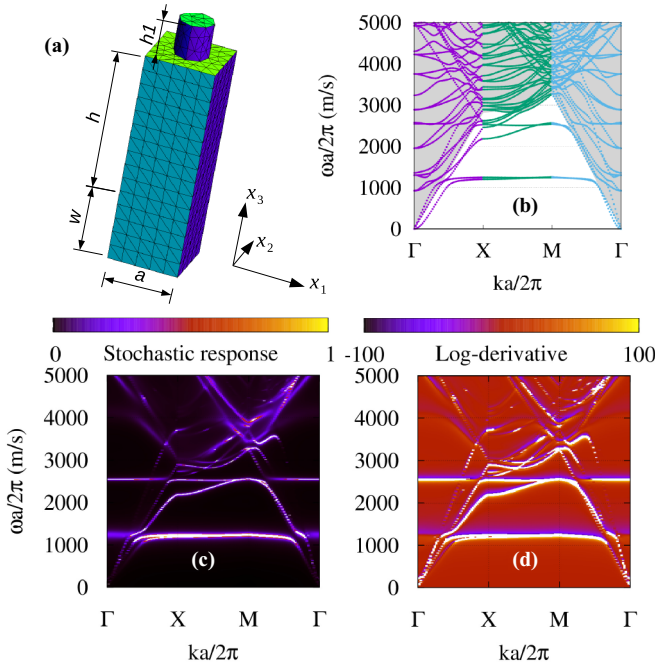


FIG. 4. A two-dimensional square-lattice phononic crystal of silicon pillars on a silicon substrate. (a) The unit cell is arbitrarily cut at a depth $h + w$ in the substrate, with w being the depth of a perfectly matched layer (PML) introduced to approximate radiation inside the semi-infinite substrate. The height of the pillar is $h_1/a = 1$, and the diameter is $d/a = 0.5$. (b) The classical band structure, generated by solving an eigenvalue problem with damping in the PML set off, gives the dispersion of nonradiative surface waves only outside the sound cone highlighted in gray. (c) and (d) The normalized stochastic response and its log derivative map the resolvent band structure throughout the (ω, k) dispersion plane.

surface guided waves computed according to the method in Ref. [12]. The overlaid sound cone indicates the bands that are removed from consideration; those bands are actually strongly dependent on the substrate thickness, and most of them are obviously spurious Lamb waves.

In order to apply the stochastic excitation method, the semi-infinite radiation medium has to be replaced by a finite region. A solution could be to couple the solution in a finite crystal layer with a homogeneous radiation medium. This is, however, applicable only in specific cases for which the Green's function is known explicitly, such as isotropic infinite media. Instead, we approximate numerically the semi-infinite substrate by an elastic PML, as summarized in Sec. A 2. A Bloch-Floquet stochastic body force is applied in the layer region.

The stochastic response and its log derivative are shown in Figs. 4(c) and 4(d). Below the sound cone, the resolvent band structure is very similar to the nonradiative band structure, as expected. Inside the sound cone, however, spurious bands are removed, and radiation damping associated with each band can easily be evaluated. In particular, the avoided crossings appearing at the intersection of local resonances of the pillars with propagating surface waves become clearly apparent. In the classical band structure of Fig. 4(b), they were damaged by interference with the spurious Lamb waves.

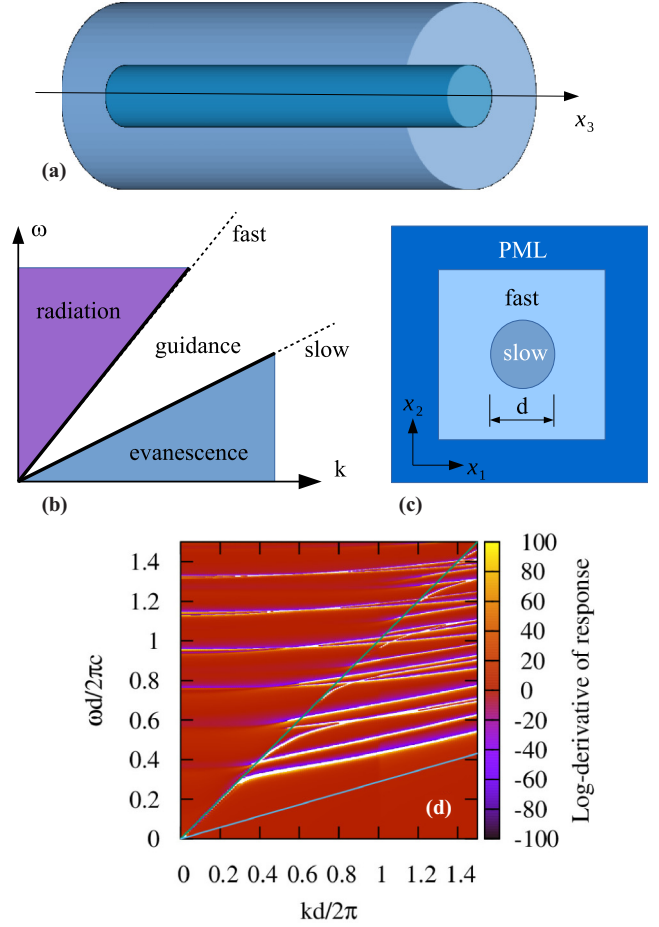


FIG. 5. Optical guidance along a freestanding silicon microwire in air ($d = 1 \mu\text{m}$). (a) Axis x_3 is an invariance axis along which the wave number k is counted. (b) The dispersion diagram for waves guided by total internal reflection is divided into three different regions: guided waves can be either fully evanescent, guided inside the slow core, or coupled to the radiation modes of air. (c) The computation domain is divided between core, cladding, and a perfectly matched layer approximating radiation to infinity. (d) The resolvent band structure maps the dispersion relation throughout the (ω, k) dispersion plane, especially informing on radiation damping inside the light cone for air.

C. Leaky guided waves in the light cone

Waveguides are structures with one invariance axis that are able to confine propagating waves around a central core. They have many applications in engineering, starting with the optical fiber. There are different guidance mechanisms, including guidance provided by a photonic or a phononic band gap, but the simplest guidance mechanism is total internal reflection. For simplicity, we will consider optical waves in the remainder of this section. As depicted in Fig. 5(a), waves can be guided in a “slow” core surrounded by a “fast” cladding, provided the dispersion of the guided waves lies in between the light lines of the core and the cladding [28]. When this condition is met, the dispersion point (ω, k) is inside the light cone of the core but outside the light cone of the cladding. The light field is then sinusoidal in the core and evanescent in

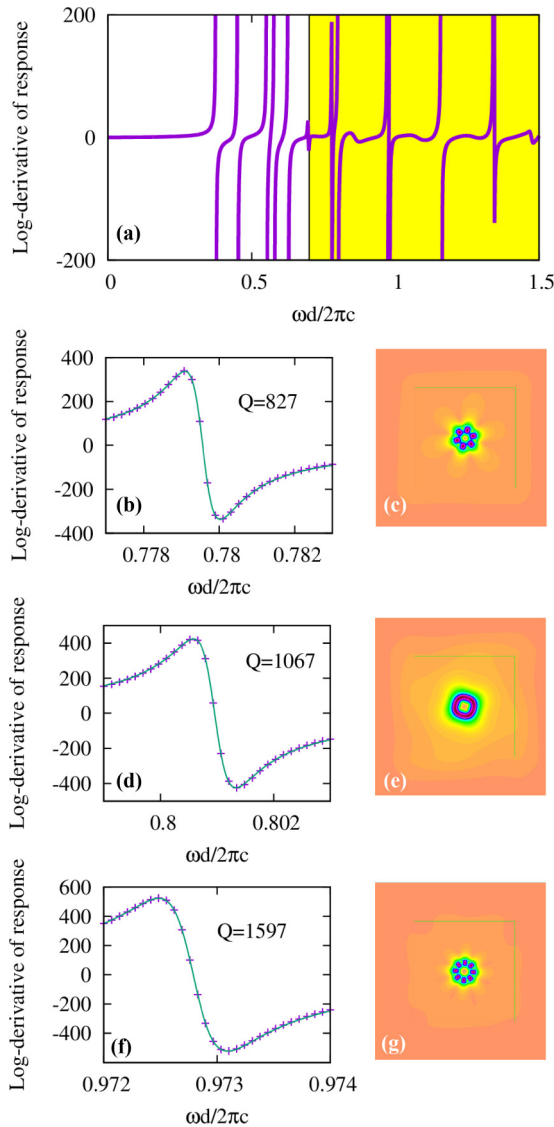


FIG. 6. Optical guidance along a freestanding silicon microwire in air ($d = 1 \mu\text{m}$). (a) The log derivative of the stochastic response is shown for $kd/(2\pi) = 0.7$. (b) The first damped Lorentzian resonance appearing in the light cone is fitted to the model of Eq. (10). (c) The magnetic field distribution at the maximum of the stochastic response in (b) approximates a particular radiation guided mode. (d) and (e) Same as (b) and (c) for the second resonance. (f) and (g) Same as (b) and (c) for the third resonance.

the cladding, implying confinement around the core as light propagates along the axis of the waveguide.

Now there are two more regions of dispersion space in Fig. 5(a). In the doubly evanescent region, there are no guided solutions in optical dielectric waveguides [28], but interface guided waves may exist in other types of systems, such as the Stoneley wave of elastic media [14]. In the radiation region, however, there exist radiation guided waves that can be regarded as a combination of waves propagating in the core with radiation modes of the infinite cladding. Many different methods have been proposed in order to obtain radiation guided waves and their approximation with leaky waves; see, for instance, Ref. [29]. In the following we illustrate

that the stochastic excitation method yields a direct mapping of dispersion and an estimate for propagation losses due to radiation.

Let us consider a freestanding silicon microwire in air, as depicted in Fig. 5(b). Maxwell's equations in dielectric media lead to the following vector wave equation for the magnetic field vector \mathbf{H} :

$$\nabla \times \left(\frac{1}{\epsilon} \nabla \times \mathbf{H} \right) - \frac{\omega^2}{c^2} \mathbf{H} = \mathbf{f}, \quad (14)$$

with ϵ being the relative dielectric constant and c being the speed of light in a vacuum. Because of the invariance of the structure along axis x_3 , solutions can be written as $\bar{\mathbf{H}}(x_1, x_2) \exp[i(\omega t - kx_3)]$. Hence, the unknown becomes the modal shape $\bar{\mathbf{H}}(x_1, x_2)$ defined in two-dimensional transverse space. As a result, it is enough to represent the solution on a two-dimensional mesh. Section A 3 gives a hybrid-mode variational formulation of guided wave optics, from which an equation system such as Eq. (1) can be obtained, as well as the expression of a PML to terminate the computation domain.

Considering guided wave stochastic excitation inside the fiber core, we obtain the resolvent band structure of Fig. 5(c). In the guidance region below the light cone for air, the usual sequence of guided modes leaves Lorentzian traces, with higher-order guided modes appearing as the frequency is increased. In the radiation region, i.e., inside the light cone for air, the resolvent band structure shows that higher-order guided modes are continuously connected to transverse resonances of the microwire, with a cutoff frequency at $k = 0$. Bands in the light cone for air are affected by radiation damping, which can be estimated from the damped Lorentzian functions. A vertical cross section of the resolvent band structure at $kd/(2\pi) = 0.7$ is presented in Fig. 6. For frequencies under the light line the bands for guided modes are undamped. Above the light line, however, all Lorentzian functions acquire a certain level of damping that can be attributed to coupling with radiation modes. Each of them can be fitted individually to the model of Eq. (10), from which the quality factor can be estimated as $Q \approx \beta/\text{Re}(\lambda_n)$. Three examples of the fitting procedure are given in Fig. 6, together with the magnetic field distributions obtained at each maxima of the stochastic response.

IV. DISCUSSION AND CONCLUSIONS

In summary, we have introduced the stochastic excitation method as a generic method to obtain a mapping of the dispersion relation for wave equations. Instead of relying on an eigenvalue problem or an equivalent root-finding method, we apply a stochastic excitation in a unit cell, with given wave number and frequency, and observe the response to this excitation. Plotting the stochastic response yields a mapping of the resolvent set, of which the spectrum is the singular complement. Close to an eigenvalue, the solution to the forced problem is proportional to the eigenfunction, and the response has a simple damped Lorentzian shape, containing information on damping in both time and space. As we have illustrated, the method (i) can be applied to frequency-dependent material loss (it would work for k -dependent loss too), (ii) takes into account radiation in an infinite or semi-infinite medium by combining it with a perfectly matched layer or other numerical technique,

and (iii) reveals radiating guided waves and resonant modes of vibration.

In contrast to eigenvalue-based methods, we don't need to look for an explicit $\omega(k)$ or $k(\omega)$ functional dispersion relation. Instead, an implicit response $E(\omega, k)$ is obtained that is similar to a local density of states. The full complex (ω, k) dispersion space can be explored if desired, although we have considered only its real restriction in this paper. In the case of material loss, it would be interesting to compare further the resolvent band structure with the complex band structure [11, 15, 30–32]. Furthermore, the theory in Sec. II has a definite relation with the Green's function operator. In particular, the spectral representation of the Green's function contains all the information on the spectrum of eigenvalues and eigenvectors. Thus, on-shell methods based on Green's functions, such as the layer multiple-scattering method [33–35], generate band structures and densities of states with properties similar to those of this paper. The stochastic excitation method does not require an explicit expression of the Green's function to be known, which is advantageous in case the structure has complicated details or contains anisotropic materials. Alternatively, if the Green's function is known, on-shell methods will probably be computationally more efficient.

The numerical efficiency of the stochastic excitation method is rather poor because the forced problem has to be solved for each dispersion point and hence a great number of times in most practical problems. It thus should not be used to replace an eigenvalue computation when the latter is possible. The method is also best suited to small unit cells, such as those used for artificial crystal and waveguide problems.

As we have shown, the result appears to be independent, to a large extent, of the precise random realization of the driving force; that is, it is almost deterministic even though the generating mechanism is stochastic. Clearly, this is possible because the stochastic excitation appears only as the right-hand side of a linear equation; the singularities of the propagation operator filter out the solution to deliver only the eigenfunctions as maxima of the response. By analogy with thermal fluctuations generating acoustic phonons, as observed, for instance, via Brillouin light scattering [36] or from visualization of the vibration modes of nanomechanical resonators from thermal noise [37, 38], the response has fluctuations, but there is little doubt that all eigenmodes are excited for each noise realization.

We note that photonic band structures have been obtained via finite-difference time-domain (FDTD) computations [39]. The FDTD method was extended to metal-dielectric [40] and phononic band structures as well [41, 42]. It works by applying a spatially random excitation, with a temporal excitation, to a finite computation domain terminated by periodic boundary conditions. By computing a Fourier transform of the solution as a function of time, a response similar to the one we have introduced is obtained. A difference is that we work in the frequency-wave-number domain directly, so the frequency resolution can be arbitrarily high, whereas it takes an increasingly long computation time with FDTD. As a result, the stochastic excitation method is adapted to resonant structures and very low group velocities. Furthermore, the computation error is not growing as a function of time, as with FDTD, but is instead increasing with frequency because the mesh captures fewer and fewer of the wave details that are of the order of the wavelength.

Finally, we suggest that the resolvent band structure can be computed for any medium supporting wave propagation as described by a time-harmonic wave equation or Helmholtz equation, which includes pressure waves in fluids, water waves, elastic waves in solids, electromagnetic waves described with Maxwell's equations (including plasmons), and structures described with Schrödinger's equation.

ACKNOWLEDGMENTS

This work was supported by the Agence Nationale de la Recherche through the Labex ACTION program (Grant No. ANR-11-LABX-0001-01). M.E.K. was supported by a grant from Région de Bourgogne Franche-Comté.

APPENDIX: MATHEMATICAL MODELS

In this appendix, we summarize the mathematical models that were used to generate the results in Sec. III.

1. Sonic crystal

A weak form of the linear acoustic equation (11) is [43]

$$\int_{\Omega} \nabla q^* \cdot \left(\frac{1}{\rho} \nabla p \right) - \omega^2 \int_{\Omega} q^* \frac{1}{B} p = \int_{\Omega} q^* f, \quad (\text{A1})$$

with q being test functions taken in the same functional space as the solution p . Ω is the domain of definition, i.e., a unit cell of the sonic crystal. Assuming a Bloch wave form for all field quantities, i.e., $p(\mathbf{r}, t) = \bar{p}(\mathbf{r}) \exp[i(\omega t - \mathbf{k} \cdot \mathbf{r})]$, $q(\mathbf{r}, t) = \bar{q}(\mathbf{r}) \exp[i(\omega t - \mathbf{k} \cdot \mathbf{r})]$, $f(\mathbf{r}, t) = \bar{f}(\mathbf{r}) \exp[i(\omega t - \mathbf{k} \cdot \mathbf{r})]$, we obtain a weak form for the periodic parts as [44]

$$\int_{\Omega} (\nabla \bar{q} - i\mathbf{k}\bar{q})^* \cdot \left(\frac{1}{\rho} (\nabla \bar{p} - i\mathbf{k}\bar{p}) \right) - \omega^2 \int_{\Omega} \bar{q}^* \frac{1}{B} \bar{p} = \int_{\Omega} \bar{q}^* \bar{f}, \quad (\text{A2})$$

with periodic boundary conditions applied on pairs of external boundaries. When the applied force vanishes, this is an eigenvalue equation giving $\lambda = \omega^2$ as a function of \mathbf{k} . When the applied forcing term is nonzero, this is an equation system of the form of Eq. (1). The corresponding total energy of the solution is computed as

$$\langle Hp, p \rangle = \frac{1}{2} \int_{\Omega} \nabla p^* \cdot \left(\frac{1}{\rho} \nabla p \right) + \frac{1}{2} \omega^2 \int_{\Omega} p^* \frac{1}{B} p. \quad (\text{A3})$$

2. Surface phononic crystal

Since the stress and strain tensors are symmetric, we can employ the contracted notation for symmetric pairs of indices [14]: the contracted indices $I = (ij)$ and $J = (kl)$ run from 1 to 6 according to the rule 1 = (11), 2 = (22), 3 = (33), 4 = (23), 5 = (13), and 6 = (12). With the definitions $T_I = T_{ij}$ and $S_J = S_{kl}$ for $I = 1, 2, 3$ and $S_J = 2S_{kl}$ for $I = 4, 5, 6$, Hooke's law (13) can be written $T_I = c_{IJ} S_J$. Considering test functions \mathbf{v} taken in the same functional space as the solution \mathbf{u} , a weak form of the elastodynamic equation for Bloch waves is [44, 45]

$$\int_{\Omega} S_I(\mathbf{v})^* c_{IJ} S_J(\mathbf{u}) - \omega^2 \int_{\Omega} \bar{\mathbf{v}}^* \cdot \rho \bar{\mathbf{u}} = \int_{\Omega} \bar{\mathbf{v}}^* \cdot \bar{\mathbf{f}}, \quad (\text{A4})$$

with

$$S_1(\mathbf{u}) = \frac{\partial \bar{u}_1}{\partial x_1} - \iota k_1 \bar{u}_1, \quad (\text{A5})$$

$$S_2(\mathbf{u}) = \frac{\partial \bar{u}_2}{\partial x_2} - \iota k_2 \bar{u}_2, \quad (\text{A6})$$

$$S_3(\mathbf{u}) = \frac{\partial \bar{u}_3}{\partial x_3} - \iota k_3 \bar{u}_3, \quad (\text{A7})$$

$$S_4(\mathbf{u}) = \frac{\partial \bar{u}_3}{\partial x_2} + \frac{\partial \bar{u}_2}{\partial x_3} - \iota(k_3 \bar{u}_2 + k_2 \bar{u}_3), \quad (\text{A8})$$

$$S_5(\mathbf{u}) = \frac{\partial \bar{u}_3}{\partial x_1} + \frac{\partial \bar{u}_1}{\partial x_3} - \iota(k_3 \bar{u}_1 + k_1 \bar{u}_3), \quad (\text{A9})$$

$$S_6(\mathbf{u}) = \frac{\partial \bar{u}_2}{\partial x_1} + \frac{\partial \bar{u}_1}{\partial x_2} - \iota(k_2 \bar{u}_1 + k_1 \bar{u}_2). \quad (\text{A10})$$

Equation (A4) is used to solve an eigensystem in case the forcing term vanishes or to obtain an equation system of the form of Eq. (1) for the stochastic excitation method. The total energy of the solution is computed as

$$\langle H\mathbf{u}, \mathbf{u} \rangle = \frac{1}{2} \int_{\Omega} S_I(\mathbf{u})^* c_{IJ} S_J(\mathbf{u}) + \frac{1}{2} \omega^2 \int_{\Omega} \mathbf{u}^* \cdot \rho \mathbf{u}. \quad (\text{A11})$$

The perfectly matched layer (PML) is next introduced to transform the infinite problem into a finite problem. The idea is to seek a solution to the dynamical equations by using a coordinate transform from a complex infinite space, which admits evanescent waves as eigenfunctions instead of plane waves, to the real finite space [13,46]. Given coordinates \mathbf{x} of real space, we introduce coordinates \mathbf{y} of complex space via a transform $y_i = y_i(\mathbf{x})$. Upon introducing the Jacobian matrix

$$J_{ij} = \frac{\partial y_i}{\partial x_j}, \quad (\text{A12})$$

we can rewrite the integrals of the variational formulation. In an integral, the integration element changes proportionally to $\det(J)$. Consider a function $u(\mathbf{x}) = \bar{u}(\mathbf{y})$. The gradient of the displacement vector transforms as

$$\nabla \bar{u} = \frac{\partial \bar{u}}{\partial y_i} = \frac{\partial x_j}{\partial y_i} \frac{\partial u}{\partial x_j} = J^{-t} \nabla u. \quad (\text{A13})$$

The inverse Jacobian has elements $J_{ij}^{-1} = \frac{\partial x_j}{\partial y_i}$ and $(\dots)'$ denotes the transposition operator.

In the case of the elastodynamic equation, the weak form becomes [44]

$$\int_{\Omega} S_I(\mathbf{v})^* c_{IJ} S_J(\mathbf{u}) \det(J) - \omega^2 \int_{\Omega} \bar{\mathbf{v}}^* \cdot \rho \bar{\mathbf{u}} \det(J) = \int_{\Omega} \bar{\mathbf{v}}^* \cdot \bar{\mathbf{f}}, \quad (\text{A14})$$

with the modified definition of the strains

$$S_1(\mathbf{u}) = J_{m,1}^{-1} u_{1,m}, \quad (\text{A15})$$

$$S_2(\mathbf{u}) = J_{m,2}^{-1} u_{2,m}, \quad (\text{A16})$$

$$S_3(\mathbf{u}) = J_{m,3}^{-1} u_{3,m}, \quad (\text{A17})$$

$$S_4(\mathbf{u}) = J_{m,2}^{-1} u_{3,m} + J_{m,3}^{-1} u_{2,m}, \quad (\text{A18})$$

$$S_5(\mathbf{u}) = J_{m,1}^{-1} u_{3,m} + J_{m,3}^{-1} u_{1,m}, \quad (\text{A19})$$

$$S_6(\mathbf{u}) = J_{m,1}^{-1} u_{2,m} + J_{m,2}^{-1} u_{1,m}, \quad (\text{A20})$$

where summation over m is implied and $u_{i,m} = \frac{\partial \bar{u}_i}{\partial x_m} - \iota k_m \bar{u}_i$.

In practice we use the following coordinate transform for the SAW problem for $x_3 < -h$:

$$y_3 = x_3 + \frac{i}{\omega} \int_{-h}^{x_3} \sigma(s) ds, \quad (\text{A21})$$

with $\sigma(s) = \beta|s + h|/w^2$, where w is the PML width and β is a numerical coefficient whose value is tuned to optimize absorption. In Fig. 4, the values $h = 2a$ and $w = a$ were used.

3. Dielectric optical waveguide

A weak form of the guided-wave optical equation (14) is [47]

$$\begin{aligned} & \int_{\Omega} \frac{1}{\epsilon} [\text{rot}(\bar{\mathbf{H}}') \text{rot}(\bar{\mathbf{H}}) + \text{div}(\bar{\mathbf{H}}') \text{div}(\bar{\mathbf{H}}) + k^2 \bar{\mathbf{H}}' \cdot \bar{\mathbf{H}}] \\ & + \int_{\delta\Omega} \bar{H}'_n \text{div}(\bar{\mathbf{H}}) \left[\frac{1}{\epsilon} \right] - \frac{\omega^2}{c^2} \int_{\Omega} \bar{\mathbf{H}}' \cdot \bar{\mathbf{H}} = \int_{\Omega} \bar{\mathbf{H}}' \cdot \bar{\mathbf{f}}. \end{aligned} \quad (\text{A22})$$

This expression is obtained by keeping as unknowns only the first two components of $\bar{\mathbf{H}}$, i.e., $\bar{\mathbf{H}} = (\bar{H}_1, \bar{H}_2)$, since the third component is set by the auxiliary Maxwell equation $\nabla \cdot \bar{\mathbf{H}} = 0$. Here we use the transverse divergence $\text{div}(\bar{\mathbf{H}}) = \bar{H}_{1,1} + \bar{H}_{2,2}$ and transverse rotational $\text{rot}(\bar{\mathbf{H}}) = \bar{H}_{2,1} - \bar{H}_{1,2}$; \bar{H}'_n is the normal component of $\bar{\mathbf{H}}'$ at the boundary $\delta\Omega$, and $[\frac{1}{\epsilon}]$ denotes the jump of the permittivity. Note that the boundary integral appears because of the noncontinuity of the electric field at the interface between different dielectric media. In Fig. 5, the boundary $\delta\Omega$ is the interface between silicon and air.

The total energy of the solution is computed as

$$\begin{aligned} E &= \frac{1}{2} \int_{\Omega} \frac{1}{\epsilon} [\text{rot}(\bar{\mathbf{H}}) \text{rot}(\bar{\mathbf{H}}) + \text{div}(\bar{\mathbf{H}}) \text{div}(\bar{\mathbf{H}}) + k^2 \bar{\mathbf{H}} \cdot \bar{\mathbf{H}}] \\ & + \frac{1}{2} \int_{\delta\Omega} \bar{H}_n \text{div}(\bar{\mathbf{H}}) \left[\frac{1}{\epsilon} \right] + \frac{\omega^2}{2c^2} \int_{\Omega} \bar{\mathbf{H}} \cdot \bar{\mathbf{H}}. \end{aligned} \quad (\text{A23})$$

Again, Eq. (A22) leads to an equation system of the form of Eq. (1). A PML is constructed as in the elastic case from a complex coordinate transformation, now along both axes x_1 and x_2 . The integrands of the first and third integrals in Eq. (A22) are multiplied by $\det(J)$, while the definition of the transverse divergence and rotational become

$$\text{div}(\bar{\mathbf{H}}) = J_{m,1}^{-1} \bar{H}_{1,m} + J_{m,2}^{-1} \bar{H}_{2,m}, \quad (\text{A24})$$

$$\text{rot}(\bar{\mathbf{H}}) = J_{m,1}^{-1} \bar{H}_{2,m} - J_{m,2}^{-1} \bar{H}_{1,m}, \quad (\text{A25})$$

where summation over m is implied.

- [1] L. Brillouin, *Wave Propagation in Periodic Structures: Electric Filters and Crystal Lattices*, 2nd ed. (Courier, New York, 1953).
- [2] E. Yablonovitch, *Phys. Rev. Lett.* **58**, 2059 (1987).
- [3] S. John, *Phys. Rev. Lett.* **58**, 2486 (1987).
- [4] L. Lu, J. D. Joannopoulos, and M. Soljačić, *Nat. Photonics* **8**, 821 (2014).
- [5] M. S. Kushwaha, P. Halevi, L. Dobrzynski, and B. Djafari-Rouhani, *Phys. Rev. Lett.* **71**, 2022 (1993).
- [6] M. Maldovan, *Nature (London)* **503**, 209 (2013).
- [7] M. I. Hussein, M. J. Leamy, and M. Ruzzene, *Appl. Mech. Rev.* **66**, 040802 (2014).
- [8] G. H. Golub and H. A. Van der Vorst, *J. Comput. Appl. Math.* **123**, 35 (2000).
- [9] M. Renardy and R. C. Rogers, *An Introduction to Partial Differential Equations*, Texts in Applied Mathematics, Vol. 13 (Springer, New York, 2004).
- [10] J.-P. Berenger, *J. Comput. Phys.* **114**, 185 (1994).
- [11] R. P. Moiseyenko and V. Laude, *Phys. Rev. B* **83**, 064301 (2011).
- [12] A. Khelif, Y. Achaoui, S. Benchabane, V. Laude, and B. Aoubiza, *Phys. Rev. B* **81**, 214303 (2010).
- [13] J. P. Hugonin and P. Lalanne, *J. Opt. Soc. Am. A* **22**, 1844 (2005).
- [14] B. A. Auld, *Acoustic Fields and Waves in Solids* (Wiley, New York, 1973).
- [15] V. Laude, Y. Achaoui, S. Benchabane, and A. Khelif, *Phys. Rev. B* **80**, 092301 (2009).
- [16] V. Romero-García, J. V. Sánchez-Pérez, S. Castiñeira Ibáñez, and L. M. Garcia-Raffi, *Appl. Phys. Lett.* **96**, 124102 (2010).
- [17] R. Olsson III and I. El-Kady, *Meas. Sci. Technol.* **20**, 012002 (2009).
- [18] S. Benchabane, O. Gaiffe, R. Salut, G. Ulliac, V. Laude, and K. Kokkonen, *Appl. Phys. Lett.* **106**, 081903 (2015).
- [19] S. Mohammadi, A. Eftekhar, W. Hunt, and A. Adibi, *Appl. Phys. Lett.* **94**, 104301 (2009).
- [20] F.-C. Hsu, J.-C. Hsu, T.-C. Huang, C.-H. Wang, and P. Chang, *Appl. Phys. Lett.* **98**, 143505 (2011).
- [21] P. E. Hopkins, C. M. Reinke, M. F. Su, R. H. Olsson III, E. A. Shaner, Z. C. Leseman, J. R. Serrano, L. M. Phinney, and I. El-Kady, *Nano Lett.* **11**, 107 (2010).
- [22] Y. Tanaka and S. I. Tamura, *Phys. Rev. B* **58**, 7958 (1998).
- [23] T.-T. Wu, Z.-G. Huang, and S. Lin, *Phys. Rev. B* **69**, 094301 (2004).
- [24] V. Laude, M. Wilm, S. Benchabane, and A. Khelif, *Phys. Rev. E* **71**, 036607 (2005).
- [25] V. Laude, K. Kokkonen, S. Benchabane, and M. Kaivola, *Appl. Phys. Lett.* **98**, 063506 (2011).
- [26] M. B. Assouar and M. Oudich, *Appl. Phys. Lett.* **99**, 123505 (2011).
- [27] D. Yudistira, Y. Pennec, B. Djafari Rouhani, S. Dupont, and V. Laude, *Appl. Phys. Lett.* **100**, 061912 (2012).
- [28] D. Marcuse, *Theory of Dielectric Optical Waveguides* (Academic, Boston, 1991).
- [29] J. Hu and C. R. Menyuk, *Adv. Opt. Photonics* **1**, 58 (2009).
- [30] M. Davanço, Y. Urzhumov, and G. Shvets, *Opt. Express* **15**, 9681 (2007).
- [31] C. Fietz, Y. Urzhumov, and G. Shvets, *Opt. Express* **19**, 19027 (2011).
- [32] M. I. Hussein, *Phys. Rev. B* **80**, 212301 (2009).
- [33] N. Stefanou, V. Karathanos, and A. Modinos, *J. Phys.: Condensed Matter* **4**, 7389 (1992).
- [34] I. E. Psarobas, N. Stefanou, and A. Modinos, *Phys. Rev. B* **62**, 5536 (2000).
- [35] R. Sainidou, N. Stefanou, I. E. Psarobas, and A. Modinos, *Comput. Phys. Commun.* **166**, 197 (2005).
- [36] G. Carlotti, *Appl. Sci.* **8**, 124 (2018).
- [37] J. S. Bunch, A. M. Van Der Zande, S. S. Verbridge, I. W. Frank, D. M. Tanenbaum, J. M. Parpia, H. G. Craighead, and P. L. McEuen, *Science* **315**, 490 (2007).
- [38] I. Tsioutsios, A. Tavernarakis, J. Osmond, P. Verlot, and A. Bachtold, *Nano Lett.* **17**, 1748 (2017).
- [39] C. T. Chan, Q. L. Yu, and K. M. Ho, *Phys. Rev. B* **51**, 16635 (1995).
- [40] F. I. Baida, A. Belkhir, D. Van Labeke, and O. Lamrous, *Phys. Rev. B* **74**, 205419 (2006).
- [41] Y. Tanaka, Y. Tomoyasu, and S. I. Tamura, *Phys. Rev. B* **62**, 7387 (2000).
- [42] M. M. Sigalas and N. Garcia, *J. Appl. Phys.* **87**, 3122 (2000).
- [43] F. Ihlenburg, *Finite Element Analysis of Acoustic Scattering*, Applied Mathematical Sciences, Vol. 132 (Springer, New York, 1998).
- [44] V. Laude, *Phononic Crystals: Artificial Crystals for Sonic, Acoustic, and Elastic Waves* (De Gruyter, Berlin, 2015).
- [45] M. I. Hussein, *Proc. R. Soc. A* **465**, 2825 (2009).
- [46] L. Zschiedrich, R. Klose, A. Schädle, and F. Schmidt, *J. Comput. Appl. Math.* **188**, 12 (2006).
- [47] J. Jin, *The Finite Element Method in Electromagnetics*, 2nd ed. (Wiley, New York, 2002).